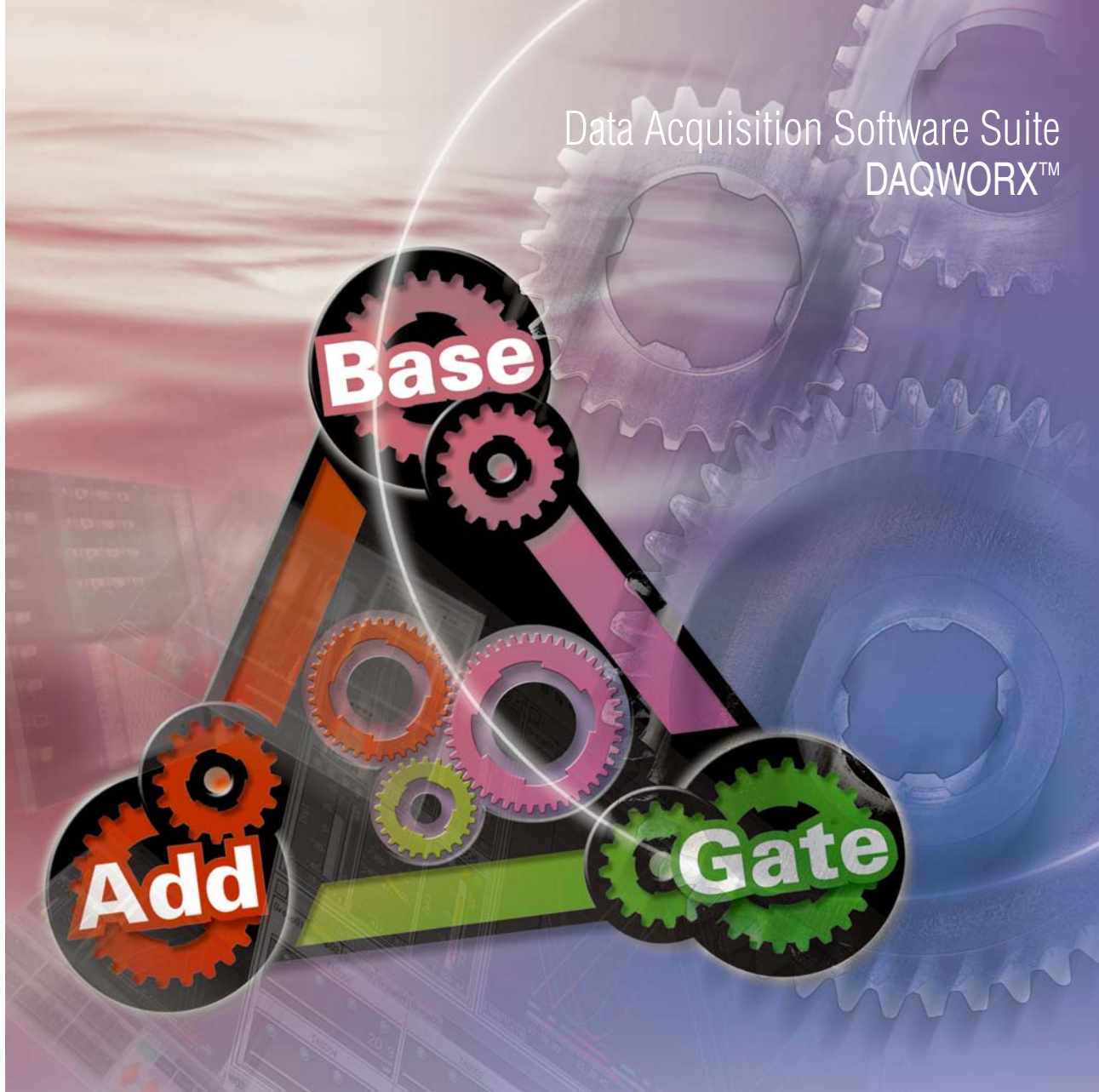


Data Acquisition Software Suite  
DAQWORX™



# DAQWORX™

Data Acquisition Software Suite

Integrated Data Acquisition Software Package

Bulletin 04L00L00-01E

[www.yokogawa.com/ns/daqworx/](http://www.yokogawa.com/ns/daqworx/)

YOKOGAWA 



## Connects a Wide Range of Devices

• Connect up to 32 of Yokogawa's major data acquisition instruments or controllers\*. • Certain models allow only up to 16 connections

Recorders

- DAQSTATION  
DX1000/DX2000, DX100/DX200,
- CX1000/CX2000
- μR10000/μR20000 Industrial Recorders
- μR1000/μR1800/VR100/VR200 Industrial Recorders
- MobileCorder  
MV100/MV200
- DX100P/DX200P Pharmaceutical Model

Data Loggers

- DARWIN Series
- DAQMASTER  
MX100/MW100

Controllers

- UT/UP Series Temperature Controllers
- JUXTA VJ Series Signal Conditioners
- POWERCERT Series Power Monitors

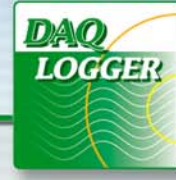
Measuring Instruments

- WT Series Digital Power Meters



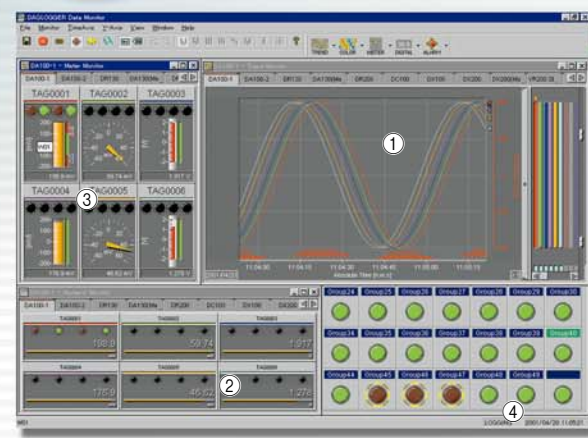
## Highly Reliable Data Logging Software

# DAQLOGGER



• Build integrated acquisition and monitoring systems comprising diverse models, all without programming.

## Data Logging and Monitoring

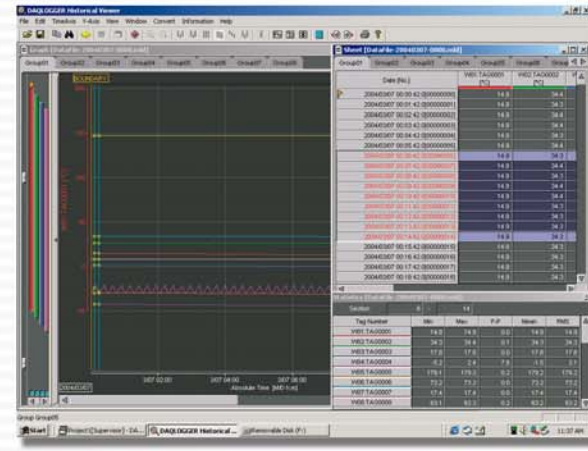


• High speed data acquisition and monitoring on up to 1600 channels (1 second intervals\*)  
 • Assign up to 50 groups of 32 channels for monitoring  
 • A wide variety of monitor displays available

- ① Analog trend display
- ② Digital value display
- ③ Meter display
- ④ Alarm overview display

\* Performance may differ depending on number of units and channels connected, communication interface, and other factors.

## Waveform Viewer and Assorted Utilities



• Redisplay saved data in trend graphs or as numerical values  
 • Statistical processing over a cursor-specified area  
 • Writing of marks (arbitrary character strings) at specified positions  
 • Search displayed data for alarms, marks, and other points  
 • Printing and conversion of data to Excel and other formats  
 • Online editing of data acquisition instrument settings \*

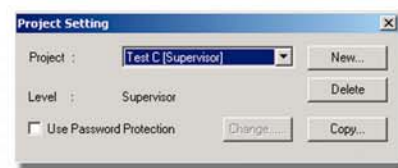
\* Excluding instruments connected via Gate software.

## More Reliable Continuous Acquisition

- Data file power failure protection function
- Communication disconnection automatic recovery function.

## Save and Load Acquisition Setups

- Save acquisition setups as arbitrarily named "Projects", and easily switch between projects
- Password protection function prevents mishandling of data



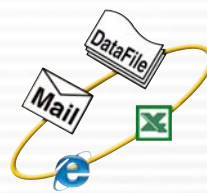
## More Reliable Continuous Acquisition

- Events**
- Alarms
  - Fixed time intervals
  - Data file complete
  - Report complete
  - Disconnect/recovery
  - User operation
  - Data value

When an event is detected, a file is created and/or a previously specified process is executed.

- Files**
- Data files
  - Report files
  - Image files
  - Messages

- Processes**
- E-mail transmission
  - FTP transmission
  - File conversion
  - HTML format output



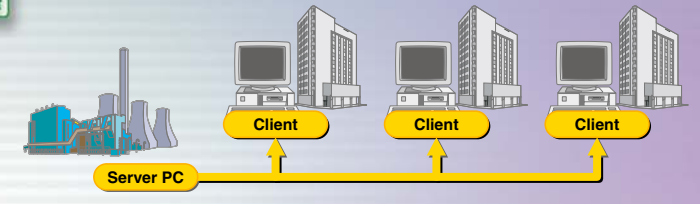
## High Added-Value Software

• Expand acquisition and monitoring functionality with Add-on software.



## DAQLOGGER Client

- Remote monitoring on up to 16 clients connected to DAQLOGGER
- Start and stop recording on DAQLOGGER remotely from the clients

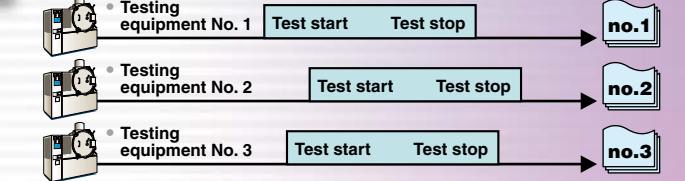


Monitor Sites Remotely



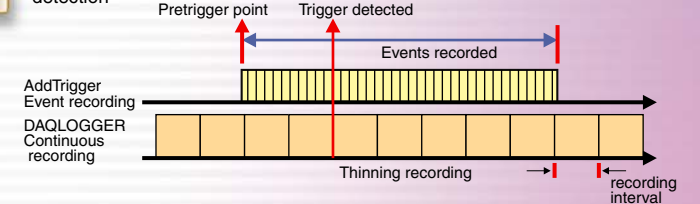
## AddMulti

- Assign up to 50 groups of up to 32 ch each and start/stop recording on each group independently.
- Recording can be manually controlled or linked to measured levels or alarm conditions.



## AddTrigger

- Start/stop recording based on trigger events set up in advance using alarm AND/OR conditions or specific times.
- Pretrigger function allows recording of data before and after the trigger detection

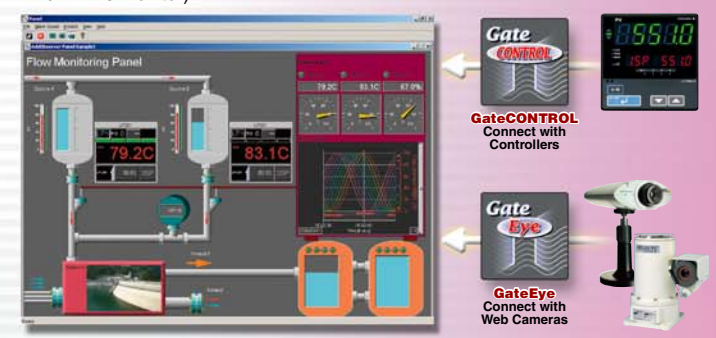


Start/Stop Data Acquisition by Group Record Details around Detected Triggers



## AddObserver

- Easily create monitor screens with a large selection of display objects (trends, meters, thermometers, etc.)
- Enables setting of SP values, switching between Run and Stop, and other operations on the connected controllers
- Displays images from Web cameras (JPEG still images)
- Enables simultaneous remote monitoring from up to 16 locations (using the Run-Time monitor)



Create Highly Intuitive Monitor Screens Operate and Monitor on-site Controllers



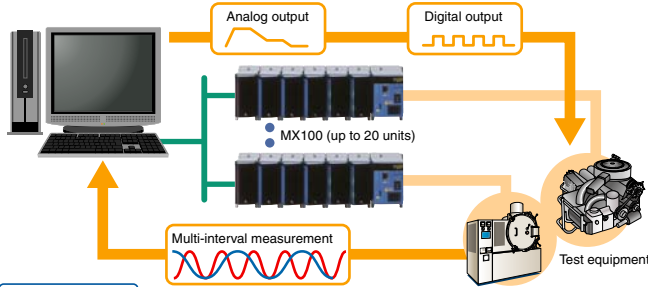
# MXLOGGER

Data Acquisition Software for the DAQMASTER MX100



## Main Functions

- Connects up to 20 MX100s for acquisition on up to 1200 channels collectively
- Operate test units with up to four types of analog waveform (pattern/manual) output and up to four types of contact manual output.
- Supports multi-interval operation (3 intervals) for highly efficient recording of a variety of signals from temperature to high speed phenomena.
- Taking advantage of the power of the PC, the software offers a variety of real time calculations (240 channels)
- Saved data can be redisplayed, printed, converted to Excel format, and manipulated in other ways.
- When combined with AddMulti/AddTrigger, you can perform trigger event recording and recording on individual groups at 24 ch/10 ms, 60 ch/100 ms, or 240 MATH ch/100 ms.
- With AddObserver, you can display data in X-Y graphs or alarm summaries.



# DAQ32Plus

- Data Acquisition Software for DARWIN
- High speed data acquisition (as fast as 0.5 seconds) on 360 channels (including MATH channels)
  - Supports Ethernet/RS-232/RS-422/RS-485/GP-IB

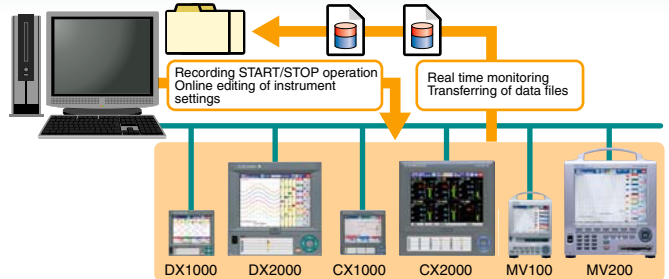
# DAQEXPLORER

DAQSTATION/MobileCorder Management Software



## Main Functions

- Centrally manage up to 16 units of the DAQSTATION or MobileCorder (excluding the DX100P/DX200P)
- Recording START/STOP, real time monitoring
- Display data files in the instrument's internal memory or on external media in a list, and easily transfer them to a PC by dragging them with a mouse.
- Data files can be redisplayed, printed, converted to Excel format, and manipulated in other ways.
- Monitor internal memory at regular intervals, automatically transfer files, and automatically convert files to Excel and other formats.
- Online editing of instrument settings.
- With AddObserver, you can flexibly design your own easy-to-read monitor screens.



# Data Browser

- File Searching and Waveform Display Software
- Search for data files on the PC by date, tag name, or other criteria
  - Display found waveforms simultaneously regardless of the model or recording interval

Supported Models: DX100/200, CX, MV, MX100Standard/MXLOGGER, DAQLOGGER/AddMulti/AddTrigger

## PC System Requirements

- CPU, Memory (for a desktop PC)** Intel Pentium III 800MHz or higher, at least 256MBytes of memory (Pentium 4 1.6GHz or higher, 512MBytes or more recommended)
- Operating System** Microsoft Windows 2000 or Windows XP (Windows XP Professional recommended)
- Free Hard Disk Space and RPMs** At least 100MBytes (1GBytes or more recommended, since measured data is stored), 7200rpm or faster recommended
- Graphic Board and Display** 1024x768 resolution XGA or better, 32768 or more colors (1280x1024 resolution SXGA or better, 65536 or more colors recommended)
- Sound Board and Speaker** A sound board and a speaker are required for sounding the alarm on the PC when alarms occur.

## List of License and Model Codes for Integrated Packages

Model	Description	Note
WX101/CD1	DAQLOGGER	Integrated data acquisition software, connect up to 32units 1600ch, highest measurement interval of 1sec <Supported models> DAQSTATION DX/CX, MobileCorder MV, DARWIN DA/DC/DR, Chart recorder μR1000/1800, View recorder VR, Gate software DAQLOGGER/MXLOGGER Client Monitor
WX81/CD1	DAQLOGGER Client	
WX1/CD1*	GateDX-P	DAQSTATION DX100P/DX200P (Style S4 or later) interface (connect up to 16 units)
	GateμR	Industrial chart recorder μR10000/μR20000 interface (connect up to 16 units)
	GateMX/MW	DAQMASTER MX100/MW100 (MW100 of firmware version R2.11 or later) interface (connect up to 32 units)
	GateCONTROL	Control product interface (connect up to 32 units) <Supported models> Temperature Controller UT100 series, Indicating Controller UT320/321/350/351/420/450/520/550/551/750, US1000, Program Controller UP350/351/550/750, Indicator with Alarms UM330/331/350/351, Signal Conditioner VJ U7/S7/A7/H7/P8/Q7/Q8/X7
	GateWT	Power meter WT100/200/1000/2000/16000 interface (connect up to 16 units)
	GateOPC	OPC DA Server interface (connect up to 16 servers)
	GateMODBUS	Modbus RTU/TCP interface (up to 300 tags)
	GateEye*	Web camera (still JPEG) interface (connect up to 4 units)
WX11/CD1	AddObserver	Add-on software for monitoring using user-created screens (with builder)
WX83/CD1	AddObserver Runtime	Add-on software for monitoring using user-created screens (run-time)
WX12/CD1	AddMulti	Data acquisition add-on software for recording by groups (32ch x 50groups)
WX13/CD1	AddTrigger	Data acquisition add-on software with various condition triggers
WX201/CD1	DataBrowser	Advanced file searching and waveform viewing software

\* With each WX1 license you can launch one Gate software application. A separate WX1 license must be purchased for each Gate program you wish to run simultaneously (up to five). Note that multiple instances of the same type of Gate program cannot be run on the same PC.  
\* GateEye is used by connecting to AddObserver.

## Note



Please read all relevant users manuals for correct and safe operation of instruments.

## List of License and Model Codes for Product Specific Packages

Model	Description	Note
WX102/CD1	DAQ32Plus	Data acquisition software for DARWIN (single connection)
WX82/CD1	DAQ32Plus Client	DAQ32Plus Client Monitor
WX103/CD1	MXLOGGER	Data acquisition software for DAQMASTER MX100 (connect up to 20 units)
WX81/CD1	DAQLOGGER Client*	DAQLOGGER/MXLOGGER Client Monitor
WX104/CD1	DAQEXPLORER	Software for DAQSTATION DX/CX, MobileCorder MV (connect up to 16 units)
WX11/CD1	AddObserver	Add-on software for monitoring using user-created screens (with builder)
WX83/CD1	AddObserver Runtime	Add-on software for monitoring using user-created screens (run-time)
WX12/CD1	AddMulti*	Data acquisition add-on software for recording by groups (32ch x 50groups)
WX13/CD1	AddTrigger*	Data acquisition add-on software with various condition triggers
WX201/CD1	DataBrowser	Advanced file searching and waveform viewing software

\* Restrictions on the number of hardware connections and the acquisition interval apply when using MXLOGGER in combination with AddMulti, AddTrigger, and DAQLOGGER Client. For more information, please visit our Web site (<http://www.yokogawa.com/ns/>) or contact your nearest Yokogawa representative.

## List of License and Model Codes for Upgrades

Model	Description	Applicable models (as of July 21, 2006)
WX101UP/CD1	DAQLOGGER upgrade	DAQLOGGER R3/R4/R5/R6 -> R7 latest release
WX102UP/CD1	DAQ32Plus upgrade	DAQ32Plus R9/R10 -> R11 latest release
WX103UP/CD1	MXLOGGER upgrade	MXLOGGER R1 -> R2 latest release
WX104UP/CD1	DAQEXPLORER upgrade	DAQEXPLORER R1/R2/R3 -> R4 latest release
WX11UP/CD1	AddObserver upgrade	DAQOBSERVER/AddObserver R1/R2/R3 -> R4 latest release
WX12UP/CD1	AddMulti upgrade	AddMulti R1 -> R2 latest release

\* The following upgrades must be purchased as full products (no discount upgrade options available): DAQLOGGER Client (R3/R4/R5/R6->R7 latest release), DAQ32Plus Client (R9/R10 -> R11 latest release), DAQOBSERVER/AddObserver Runtime (R1/R2/R3 -> R4 latest release).  
\* For release upgrades from older versions other than the above, please contact your Yokogawa representative.

## Key Points When Placing Orders:

- When ordering a WX□□□/CD1, the DAQWORX CD-ROM complete set and license sheet will be shipped.
- When ordering several WX□□□/CD1, the ordered quantity of the CD-ROM media boxes will be shipped.
- The CD-ROM media box (/CD1) contains all software. Please specify only one /CD1 if you don't need several media boxes.

## Free Revision Upgrade

- Customers with the latest version of the license (see table below) can upgrade to the latest release (obtain a "revision upgrade") of the software through one of the following methods.
- Through the latest edition of the DAQWORX CD-ROM obtained when purchasing other additional software. Otherwise, you can also purchase the CD-ROM medium only (model B9991WB).
- Download the upgrade from the Product Registration members page on our company's Web site (<http://www.yokogawa.com/ns/daworx/>).

## List of versions eligible for the free revision upgrade (as of July 21, 2006)

DAQLOGGER/DAQLOGGER Client: R7, Gate software: All, DAQ32Plus/DAQ32Plus Client: R11, MXLOGGER: R2, DAQEXPLORER: R4, AddObserver/AddObserver Runtime: R4, AddMulti: R2, AddTrigger: R1, DataBrowser: none
--

Yokogawa, DAQWORX, DAQSTATION, DAQMASTER, and MobileCorder are registered trademarks of Yokogawa Electric Corporation. Microsoft, Windows, Windows XP, and Excel are registered trademarks of Microsoft Corporation. Lotus is a registered trademark of International Business Machines Corporation. Intel and Pentium are registered trademarks of Intel Corporation. OPC is a trademark of OPC Foundation. Modbus is a registered trademark of Schneider Automation Inc. Other company/product names are registered trademarks or trademarks of their respective companies.



## YOKOGAWA ELECTRIC CORPORATION

Network Solutions Business Div./Phone: (81)-422-52-7179, Fax: (81)-422-52-6619  
E-mail: ns@cs.jp.yokogawa.com

YOKOGAWA CORPORATION OF AMERICA  
YOKOGAWA EUROPE B.V.  
YOKOGAWA ENGINEERING ASIA PTE. LTD.

Phone: 800-888-6400, Fax: (1)-770-251-6427  
Phone: (31)-33-4641806, Fax: (31)-33-4641807  
Phone: (65)-62419933, Fax: (65)-62412606

Subject to change without notice.

[Ed : 02/b] Copyright ©2006  
Printed in Japan, 607(KP)



Sign up for our free e-mail newsletter  
[www.yokogawa.com/ns/](http://www.yokogawa.com/ns/)

RS-16E

Subject to change without notice.

All Rights Reserved, Copyright© 2006, Yokogawa Electric Corporation.